

Trombone 2

# The Passenger

Iggy Pop and Ricky Gardiner arr Ian Burton

MAIN RIFF

Can be played all the way through

Musical notation for the main riff in 4/4 time, consisting of four measures of eighth notes.

FULL ARRANGEMENT

1 **1** INTRO **12** **2** VERSE 1 **15**

Musical notation for the full arrangement, showing measures 1-12 (Intro), 13-15 (Verse 1), and the start of Verse 2.

**3** VERSE 2

Musical notation for the first measure of Verse 2.

Musical notation for the second measure of Verse 2.

Musical notation for the third measure of Verse 2, ending with a 3-measure rest.

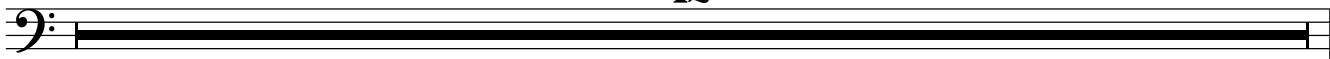
**4** CHORUS 1

Musical notation for the first measure of Chorus 1, marked with a forte (*f*) dynamic.

Musical notation for the second measure of Chorus 1, ending with a 4-measure rest.

5 VERSE 3a

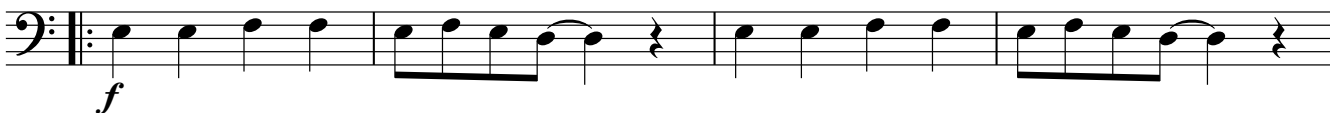
12



6 VERSE 3b



7 CHORUS 1



8 CHORUS 2 Either repeat and fade, or end on the last time only three note stab

