

# The Passenger

By Iggy Pop and Ricky Gardiner, arr. Ian Burton

**Possible structure of The Passenger:**

- intro (section 1)
- verse 1 (section 2)
- verse 2 (section 3)
- chorus 1 (section 4)
- verse 3a (section 5)
- verse 3b (section 6)
- chorus 1 (section 7)
- chorus 2 (section 8)

These are all of the sections that you can play in The Passenger

You can just play this main riff all the way through



These are the main sections for your instrument

**Intro:** Section **1**

PLAY MAIN RIFF 3 TIMES

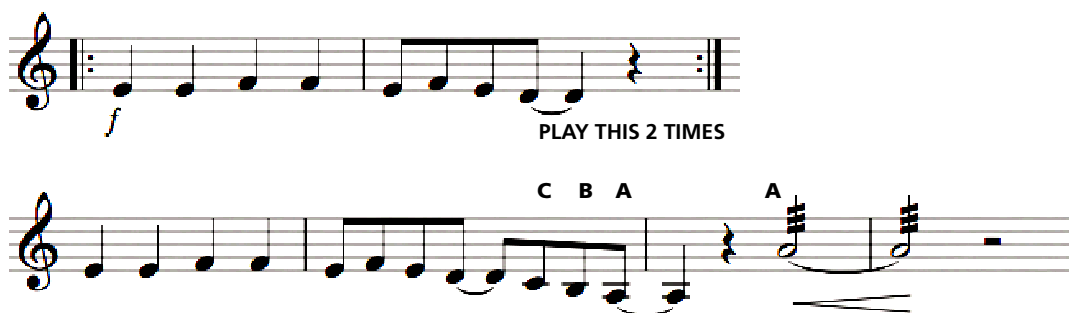
**Verse 1:** Section **2**

PLAY MAIN RIFF 4 TIMES

**Verse 2:** Section **3**

PLAY MAIN RIFF 4 TIMES

**Chorus 1:** Sections **4** and **7**



THEN, ON SECTION 4 ONLY, PLAY MAIN RIFF ONCE

Try these sections if you have time

Verse 3a: Section 5



Musical notation for Verse 3a: Section 5, consisting of three staves of music in 7/8 time. The first staff has two measures with rests. The second staff is marked "PLAY THIS 2 TIMES" and contains two measures. The third staff contains two measures.

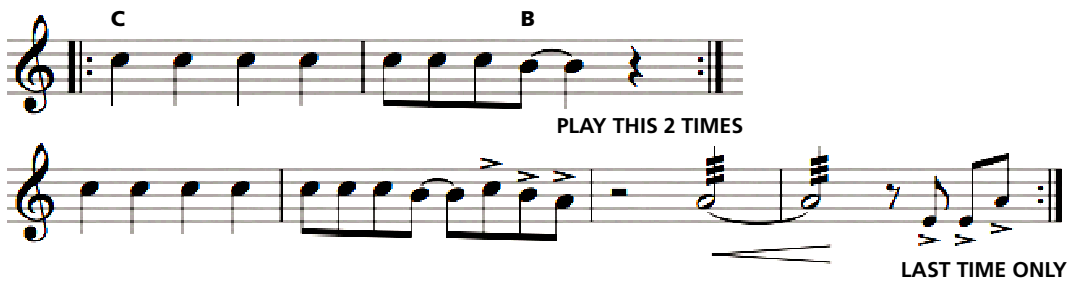
Verse 3b: Section 6

PLAY MAIN RIFF 3 TIMES

Chorus 2: Section 8

EITHER:

- repeat the whole of this section and fade, or
- end with the three note stab on the last time only



Musical notation for Chorus 2: Section 8, consisting of two staves. The first staff has two measures labeled 'C' and 'B', followed by a double bar line and the instruction "PLAY THIS 2 TIMES". The second staff contains two measures, with the final measure marked "LAST TIME ONLY" and featuring a three-note stab.