

Baritone 1

# The Passenger

Iggy Pop and Ricky Gardiner arr Ian Burton

MAIN RIFF  
Can be played all the way through

Musical notation for the main riff in 4/4 time, consisting of four measures of eighth notes.

FULL ARRANGEMENT

1 **1** INTRO **12**

Musical notation for the intro section, marked with a '1' in a box and a '12' above the staff.

**2** VERSE 1

Musical notation for the first measure of Verse 1.

Musical notation for the second measure of Verse 1.

Musical notation for the third measure of Verse 1, ending with a double bar line and a '2' above.

**3** VERSE 2

Musical notation for the first measure of Verse 2.

Musical notation for the second measure of Verse 2.

Musical notation for the third measure of Verse 2, ending with a double bar line and a '2' above.

**4** CHORUS 1

Musical notation for the first measure of Chorus 1, starting with a forte 'f' dynamic.

Musical notation for the second measure of Chorus 1, ending with a double bar line and a '4' above.

5 VERSE 3a

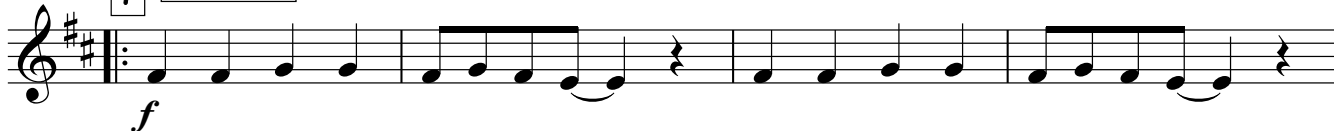
12



6 VERSE 3b



7 CHORUS 1



8 CHORUS 2

Either repeat and fade, or end on the last time only three note stab

